

---

# Associated Express

---

*Customer Newsletter for Associated Finishing, Inc., formerly Associated Engineering of Mankato, Inc.*

320 State Road Mankato, MN 56001 Phone: (507) 345-5861 Fax: (507) 345-5828

Summer 1998

---

## Big Changes at Associated

---



Once in a while our estimator will get a call along these lines: "Associated Engineering, is it? Say, I was wondering if you could design this part for me?" By and large we are recognized as one of the most versatile finishing shops in the Midwest. However, at first glance, our name doesn't give that away.

After being known as Associated Engineering since 1965, we've decided to change the name of the corporation to something a bit more characteristic of what we do. Chuck Klammer's father was a design engineer and started out with painting as just a sideline. At the time, the name fit very well. When Chuck took over the business, he used his sales and marketing skills

to expand on the painting part of the business. As children out-grow clothes, we out-grew our name.

As before, Associated does a lot more than just paint parts, but the word "Engineering" is misleading. We felt it was about time we had a name that indicated our expertise in painting, powder coating, RFI shielding, pad printing, silkscreening and stripping, or "definishing".

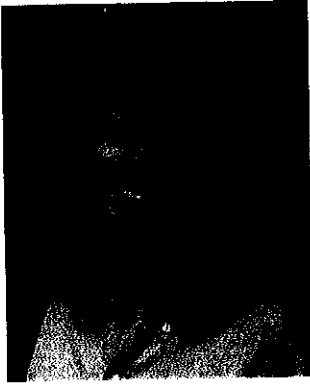
Since what we really do is put the finishing touch on other people's parts, we've changed our name to Associated Finishing, Inc. In the months ahead, look for our new truck signs, business cards and stationery.

---

*Powder Coating -- Liquid Coating -- Pad Printing  
Paint Stripping -- Silkscreening -- R.F.I. Shielding*

---

## Welcome!



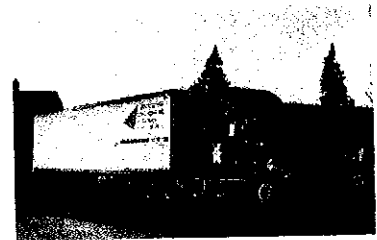
Associated Express is brought to you four times a year, organized by Karin Bauer, our Marketing Coordinator. After teaching science in New York and Kansas City, Karin got married which brought her here to Mankato. Karin's husband, Steve, will be attending school in New Ulm for one more year before they relocate to Mequon, WI where Steve will attend the seminary for the Wisconsin Synod Lutheran Church.

"I like working here so much that I don't even miss summer vacation," Karin says. Along with the Marketing position comes the maintenance of Associated's contact manager as well as employee benefits. "One plus about teaching was the variety. I was afraid that working in an office all day might get monotonous. However, with my position here, every day is different and I really enjoy that."

## Associated Delivers Quality

Finishing parts to meet customer specifications is delicate business. When coating individual parts, a number of factors have to be just right. A slight change in cure oven temperature can make one part come out more glossy than the parts it must match. For individual pieces to fit together after coating, paint or powder thickness must meet specific guidelines. Besides looking exactly the same, the finish on each part must stand up to harsh environments.

Associated uses a number of different pieces of equipment and procedures to assure the quality of the finished product. Be on the lookout for a detailed article from our Quality Department in an upcoming issue of Associated Express.



***Our fleet of trucks allows us to pick up and deliver parts in the Twin Cities area on a daily basis.***

### Routing

- ☐ Read \_\_\_\_\_
- ☐ Forward \_\_\_\_\_
- ☐ Return \_\_\_\_\_

***Please pass this along to others at your company.***

*Associated Finishing is  
a proud member of  
The Powder Coating  
Institute.*



***Powder Coating -- Liquid Coating -- Pad Printing  
Paint Stripping -- Silkscreening -- R.F.I. Shielding***